

ANNUAL REPORT 2021



YAMBA  MALAWI



DEAR FRIENDS,

I am pleased to share with you Yamba Malawi's 2021 annual report.

Despite the new and expanded global challenges encountered, the unwavering support received from donors, community, and government partners enabled us to carry on our important work. And, while the COVID-19 pandemic induced more hardships, Yamba Malawi learned novel ways to adapt and sustain our steadfast efforts to end childhood poverty.

**THERE IS GOOD NEWS.
OUR RESILIENT PROGRAMS
CHANGED THE STORIES OF
THOUSANDS OF MALAWIAN
CHILDREN, AND RENEWED THEIR
HOPE FOR THE FUTURE.**

Last year, we supported more than 55,000 children through our family and community level programs; including 616 households. Now, 50% more children are attending preschool regularly, over three times the

number of families have enough food reserves, and families have 11 times more savings to prepare for the future.

**YET , WHILE SIGNIFICANT
PROGRESS WAS MADE , THE
SITUATION REMAINS URGENT
AND WE MUST TAKE ACTION.**

Impacts of the enduring COVID-19 pandemic, growing economic hardships, and an increasing climate crisis have made everyday life even more difficult for the world's one billion children trapped in poverty. In Malawi alone, over seven million children lack basics, like safe water, enough food, and access to medicine when they are sick. Yamba Malawi is more determined than ever to ensure more children have the opportunities to experience the happy, healthy childhoods they deserve. We will persevere in addressing the root causes of poverty through ongoing parenting support, business training, and financial planning for caregivers and communities, and

consequently, build their resilience to overcome ongoing obstacles as they build brighter futures for their children.

**CHANGE IS HAPPENING NOW.
TOGETHER, WE CAN END
CHILDHOOD POVERTY.**

Childhood poverty is complex, requiring both multidimensional solutions and plentiful hands. With your help, we will continue to advance our holistic, community-led model to transform even more children's lives in Malawi.

From all of us at Yamba Malawi, thank you for your unwavering support to make this possible and provide brighter futures for more children.

ZIKOMO KWAMBIRI - a warm Malawian thank you,

Sincerely,




Gertrude Kabwazi
Executive Director



OUR MISSION + VISION

Yamba Malawi's mission is to uplift vulnerable children by empowering their communities to break the cycle of poverty. Our vision is a world where strong, resilient communities build brighter futures for children.



OUR ORGANIZATIONAL VALUES



UMUNTHU INTEGRITY

Trust is central to everything. We act with accountability, honesty, and transparency in everything we do.



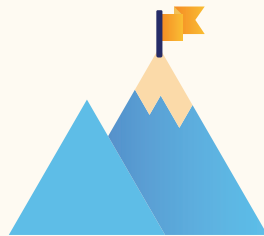
LUSO CREATIVITY

We remain adaptable. Challenging each other to continuously learn, take risks, foster diverse ideas, and embrace flexibility and innovation.



UMODZI EQUITY & DIVERSITY

True progress involves everyone. We can all champion social justice to help eradicate poverty, actively seeking to dismantle our role in oppressive legacies of colonialism and patriarchy.



KHAMA RESILIENCE

We embrace difficulties. We challenge the status quo and take bold action that recognizes the power in each and every one of us.



M'GWIRIZANO COLLABORATION

We are a community. Building impactful, collaborative partnerships that value respect and the unique contribution of each individual.

OUR URGENT CALL TO ACTION

NO CHILD DESERVES TO GROW UP IN POVERTY.

And yet, over one billion children worldwide are impacted by poverty, including two out of three children in Malawi. Moreover, the enduring COVID-19 pandemic, economic challenges, and climate change make their everyday survival even harder.

Poverty is complex and can impact children's access to healthcare, education, proper nutrition, and adequate housing. Without these basic building blocks of a happy, healthy childhood, children face deficits not easily overcome that can leave them unable to reach their full potential.

WE ARE MAKING PROGRESS, BUT SIGNIFICANT NEED REMAINS.

In 2021, Yamba Malawi reached 55,000 children through our holistic, community-led programs that address the root causes of poverty; and our innovative and proven model has the potential to impact the lives of children around the world.

Now, 50% more children are attending preschool regularly, over three times the number of families have enough food reserves, and families have 11 times more savings to prepare for the future.

TOGETHER, WE CAN END CHILDHOOD POVERTY AND CREATE BETTER, BRIGHTER FUTURES FOR ALL CHILDREN.



AT A GLANCE:

2021 IMPACT DATA

In 2021, we reached over **55,000 children** in Malawi by building businesses and financial stability with their caregivers, totaling **616 households**, to help break the cycle of poverty.

We also supported children through our training of **82 preschools** or community-based care centers. This impact matters as we work to improve access to food, health care, sanitation, safe housing, education, and protection.

Last year, Yamba Malawi also expanded to partner with **11 communities** across two districts, Lilongwe and Mangochi, including within the traditional authorities of Chiseka, Kalolo, Khongoni, and Mtonda.



OUR GOALS

FOR CHILDHOOD WELLBEING

Childhood wellbeing is dependent on many factors and we work to improve these core outcomes for children.



FOOD SECURITY

Decrease childhood malnutrition by increasing both the quantity and diversity of available food



W.A.S.H.

Decrease childhood exposure to waterborne pathogens through improved facilities, and better WASH and hygiene practices



EDUCATION

Improve cognitive development, school readiness, and school attendance through an Indigenous Knowledge-based approach



HEALTH

Improve childhood health by education on disease prevention and treatment, and systems strengthening



HOUSING

Improve safety and wellbeing by enabling caregivers to provide safe and secure environments, living structures, and basic material needs



PROTECTION

Decrease instances of child abuse, labor, and marriage through advocacy and strengthened safety nets

OUR IMPACTS

ON CHILDREN AND THEIR FAMILIES

In 2021, Yamba Malawi realized the following impacts building brighter futures for children and lasting change for their communities.

IMPROVING WELLBEING AND FUTURES FOR CHILDREN



Prevalence of disease and illness has gone down by over 80% since the start of the program.



Over 3 times the number of families have enough food reserves.



Children regularly attending preschool has increased by over 50%.

BREAKING THE CYCLE OF POVERTY FOR FAMILIES AND COMMUNITIES



Program participants had an average increase of 38% in their income since the start of the program.



Program participants had an average increase of 11 times their savings, many having savings for the first time.



HOW IT WORKS

Our child-focused poverty graduation program is a three-year intervention that focuses on fostering childhood wellbeing, sustainable businesses, and financial literacy to break the cycle of extreme poverty and uplift children's lives.

The result is a program that empowers families and communities to lift themselves out of poverty and improve their children's developmental outcomes, specifically in nutrition and food security, education, health, water, sanitation, housing, and protection against child labor, child marriage, and gender equality, and to ultimately realize brighter futures.



ADDRESS IMMEDIATE NEEDS OF CHILDREN MONTHS 0 - 6

Families receive cash transfers to meet children's basic needs of nutrition, education, healthcare, and protection, are connected with existing social services for children, and attend trainings on childhood wellbeing, financial literacy, and sustainable business. They start saving money and setting goals, and embark on their journey out of poverty.



EMPOWER CAREGIVERS TO START AND RUN BUSINESSES MONTHS 7 - 24

Through one-on-one mentorship, group sessions, and community-wide awareness events caregivers build knowledge and strengthen supports for children. With seed funding and training, caregivers launch their own business. Newly diversified incomes are invested in children's needs, and as a result, childhood outcomes improve, and families transition from addressing immediate needs to building for the future.



BREAK THE CYCLE OF POVERTY AND BUILD FINANCIAL RESILIENCE MONTHS 25 - 36

Children benefit from significant improvements in childhood development outcomes, as their families grow incomes and savings. Entrepreneurs receive ongoing support, coaching, and training to ensure business sustainability, growth, and impact. Children receive the nurturing, protective care they need to thrive, and their communities continue on the path to long-lasting change.

HOW IT WORKS

INVESTING IN
CHILDREN'S EDUCATION:

MEET THE GILIBATIS

Emelida Gilibati is a 24 year old mother of two children Trinity (3 years) and Tiyamike (6 years) and lives in the community of Khongoni, Lilongwe District.

Prior to joining the Yamba Malawi program at the end of 2020, Emelida struggled to pay for school fees and new clothes for her children. She did not have access to a bike to bring her children to receive medical services when they were sick.

Now, a year into the program, Emelida has received training, one-on-one coaching, and start-up capital to launch her fishmongering business. With profits from her new business, she is able to ensure her children have enough nutritious food and pay for her children's school. Better yet, her children are thriving at school and have passed their classes.



Yamba Malawi is supporting families and now 50% more children are regularly attending preschool.

// THE FUTURE IS NOW
BRIGHT FOR MY
CHILDREN AND ME. I AM
THANKFUL TO THOSE
WHO ARE PROVIDING
THE SUPPORT. //



EXPANDING TO NEW COMMUNITIES

INTRODUCING MANGOCHI, MALAWI

In 2021, Yamba Malawi launched in Mangochi District in the Southern Region for the first time. Mangochi experiences one of the highest rates of poverty in the country. We partner with these communities to help end childhood poverty.

The first cohort enrolled 300 caregivers, who are receiving monthly cash transfers, one-on-one coaching, and training on sustainable business, financial literacy, and childhood wellbeing. In 2022, we are launching a women-only cohort for the first time.

Often, women in Malawi have less access to income, education, and financial services. In addition, social norms legitimize gender-based violence and reduce women's power over resource management, ownership and utilization. There are increasing numbers of teen pregnancies which affect girls' education outcomes and women's empowerment efforts. Since 2020, the ongoing COVID-19 pandemic has exacerbated these issues increasing teen marriage and pregnancies. Young mothers, who typically have not completed secondary school and are often unmarried and face stigmatization, are in need of support. Gender equality is key to ending childhood poverty.

That is why we are partnering with female caregivers to improve access to and support on education, income, asset ownership, and other resources.



Mangochi is one of the poorest districts in Malawi.
More than 8 out of 10 people live in poverty.

**CAREGIVERS ARE BREAKING THE CYCLE OF
POVERTY AND BUILDING BRIGHTER FUTURES
FOR THEIR CHILDREN.**

**SUPPORTING FAMILIES
SAVING FOR THE FUTURE:**

MEET ALICK MKHUTU

Alick Mkhutu (42 years) is a father to Bright (five years), and Alinafe (four years) and lives in the community of Khongoni.

Before Yamba Malawi, he struggled to make ends meet, and was dependent on seasonal work to care for his eight children. Alick describes the monthly financial support he received as a game-changer in his life because he could buy food, pay school fees, and cover expenses. Simultaneously, Alick received training and coaching for starting a business and saving.

Now, Alick and his wife, Clemence, have created a business plan and budget to sell dry fish at the nearby market, and learned to plan for the future. Now, they can afford to buy their children new clothes, blankets, and food. Alick is a member of the Village Savings and Loans Group (community-led banks) and understands the importance of saving. He wants to construct a modern house, raise livestock, and become an even more prosperous businessman.



Because of Yamba Malawi financial coaching,
11 times more families have savings.

**// THANKS TO YAMBA MALAWI
PROGRAMS, INCLUDING
CONSUMPTION SUPPORT AND
BUSINESS TRAINING, HERE WE
ARE, FORMER EXTREMELY POOR
PEOPLE WHO ARE TALKING
ABOUT SHARES IN OUR
OWN BANK! //**

ORGANIZATIONAL HIGHLIGHTS



MALAWIAN LEADERSHIP & REGISTRATIONS

In 2021, Yamba Malawi completed our local registration as a Malawian organization and elected five members to the Board of Directors, who bring an impressive breadth and depth of experience and expertise. Expanding Malawian leadership remains a key priority and aligns with our values of diversity and inclusion.

Along with our expanded registration, Gertrude Kabwazi was promoted to Executive Director. She brings over 25 years of extensive experience as a development practitioner and social justice activist to her leadership of the Malawian and US team efforts to end childhood poverty.



EARLY CHILDHOOD DEVELOPMENT AND ADVOCACY

We participated in Early Childhood Development week in October 2021 as members of the Malawi Ministry of Gender's Technical Working Group on Early Childhood Development. And we were joined by notable speaker Minister of Gender, the Honourable Patricia Kaliati. Our Indigenous Knowledge-Based Early Childhood Development curriculum is the only one in Malawi recognized by the national government.





IN THE NEWS

Yamba Malawi was featured on iheartradio, Global Development Primer Podcast with Dr. Bob Huish, Pod Save Africa, and Afriicana Woman.



15 YEAR ANNIVERSARY CELEBRATION

Yamba Malawi celebrated, virtually, 15 years working to build brighter futures for children by empowering families to break the cycle of poverty. We honored former President of Malawi, Her Excellency Dr. Joyce Banda, for her leadership to improve lives in Malawi and her support to empower women and girls.



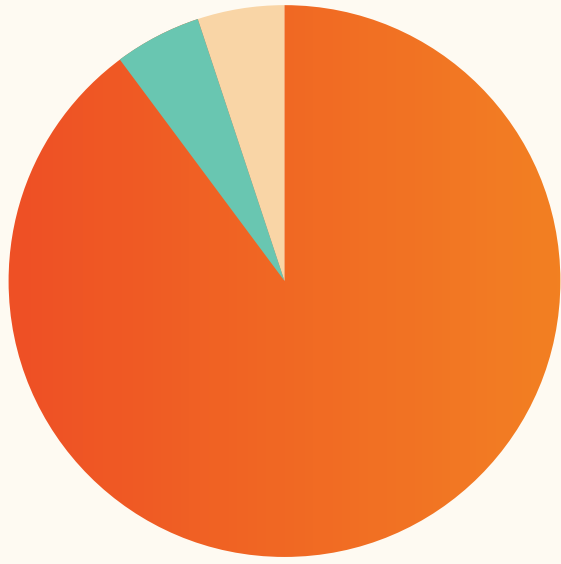
ADDITIONAL CELEBRATIONS

Additional events like Mahj for (Yamba) Malawi in New York City, TCS New York City Marathon, and our virtual Yamba Malawi Fireside Chat helped share and celebrate our work with audiences new and old, and raise funds to end childhood poverty.

ORGANIZATIONAL HIGHLIGHTS

FINANCIALS

We are committed to ensuring each dollar donated is best utilized to better children's lives, and to sharing our progress with the utmost transparency and accountability.



82% SPENT ON PROGRAMS
 9% ON ADMINISTRATION
 9% ON FUNDRAISING

TOTAL SUPPORT & REVENUE	\$3,374,335
PROGRAM EXPENSES	\$1,541,076
MANAGEMENT & GENERAL EXPENSES	\$177,858
FUNDRAISING EXPENSES	\$170,574
TOTAL EXPENSES	\$1,889,508
TOTAL ASSETS	\$2,868,068
TOTAL LIABILITIES	\$233,385
NET ASSET BALANCE	\$2,634,683



Yamba Malawi is proud to be a good steward of your donation. We are accredited by the Better Business Bureau, rated Platinum on Guidestar, and received a perfect 100 score on Charity Navigator.





LEADERSHIP

EXECUTIVE LEADERSHIP

Executive Director, Gertrude Kabwazi
Managing Director, Kim McCall (joined in 2022)
Founder & US Board Chair, Melissa Kushner
Malawi Board Chair, Madalo Samati

MALAWI BOARD OF DIRECTORS

Jane Asani • Timothy Kachule • Lingalireni Mihowa
Madalo Samati, Chair • Ralph Sauti-Hahn

US BOARD OF DIRECTORS

Taryn Blank • Bethanie Brady • Alex Bussenger • Nathan Chiume
Soraya Darabi • Abby Doft • Sonia Farber • Ryan Hill • Jeremy
Kaplan • Melissa Kushner, Chair • Mark Lakin • Meryl Levin • Patrick
Kandawire • Stephen Murray • Thandie Nyirenda • Andrea Saper
Jason Segal • Peter Twyman

YAMBA MALAWI TEAM

We are immensely proud to have a diverse team of passionate, talented professionals leading and implementing our child-focused programs. This includes highly experienced teams of 35 staff in Malawi and five staff in the United States. Furthermore, we're excited to share that 80 percent of leadership roles are held by women.



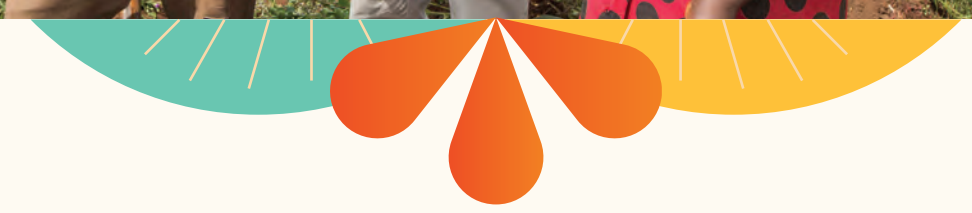
ZIKOMO KWAMBIRI

To the entire Yamba Malawi community, we are so incredibly grateful. We have bold goals and we could not do this without your support, especially as global challenges escalate. It's thanks to you that we are able to impact the lives of even more children in Malawi. To every partner, supporter, follower, and friend – thank you for all you make possible!



PARTNERS IN OUR WORK

We are honored to partner with new and ongoing organizations advancing our work to end childhood poverty, including the Coca-Cola Foundation, the Conrad N. Hilton Foundation, Dovetail Impact Fund, the International Foundation, the Mayberg Foundation, the Morgan Stanley Foundation, the Syde Hurdus Foundation, The Adventure Project, and Together Women Rise.



PROGRAM PARTNERS

To support our work within Malawi, we've partnered with the following organizations: Bright Vision CBO, Chimtolo CBO, Kangulete CBO, Luzi CBO, Mchenga CBO, Mchezi CBO, Msasa CBO, Namwera Aids Coordinating Committee - NACC, Nancholi CBO, Nyanja CBO, Senenje CBO, Tiyambenawo CBO, and Ufulu CBO.



// Together Women Rise is proud to partner with Yamba Malawi to empower women, including many young mothers, to break the cycle of poverty for themselves and their children. We appreciate that Yamba Malawi uses a unique poverty graduation model that offers both community-wide programming and household-level support. //

DR. VEENA KHANDKE
TOGETHER WOMEN RISE



// I am passionate about impacting rural children's lives and supporting the next generation of Malawians. With Yamba Malawi's child-focused poverty graduation program, we are building new beginnings for children and lasting change for their communities. //

MADALO SAMATI
MALAWI BOARD CHAIR



// I was thrilled to join the Board of Directors in 2021. As an entrepreneur and mother, Yamba Malawi resonated with me because of its sustainable approach to families building businesses to invest in their children's futures. I also deeply value Yamba Malawi's focus on Malawian leadership and locally-led solutions to ensure the best outcomes for children and their communities. //

SONIA FARBER
US BOARD OF DIRECTORS





To learn more, visit

YAMBAMALAWI.ORG

or email us at

INFO@YAMBAMALAWI.ORG

MALAWI

Plot number 101,
Area 6, P.O. Box 3284
Lilongwe, Malawi

NEW YORK

244 Fifth Avenue, Suite 1280
New York, NY 10001

Special thanks to our photographers, Billy Farrell of BFA, Ishmael Malidadi, Cameron Mulleaneux, and Jonathan Wallen. Thanks to our filmmakers, Ashley Gutierrez, Jacob Watson, and Kody Zenger at Cliff Co. and Cameron Mulleaneux as well as Ishmael Malidadi of Starline Media. Sincere appreciation to our graphic designers Erin Rommel and Sabrina Bezerra at Second Marriage.